



Shenzhen Likeled technology Co., Ltd

RSCK Series Smart All-in-one Sphinx



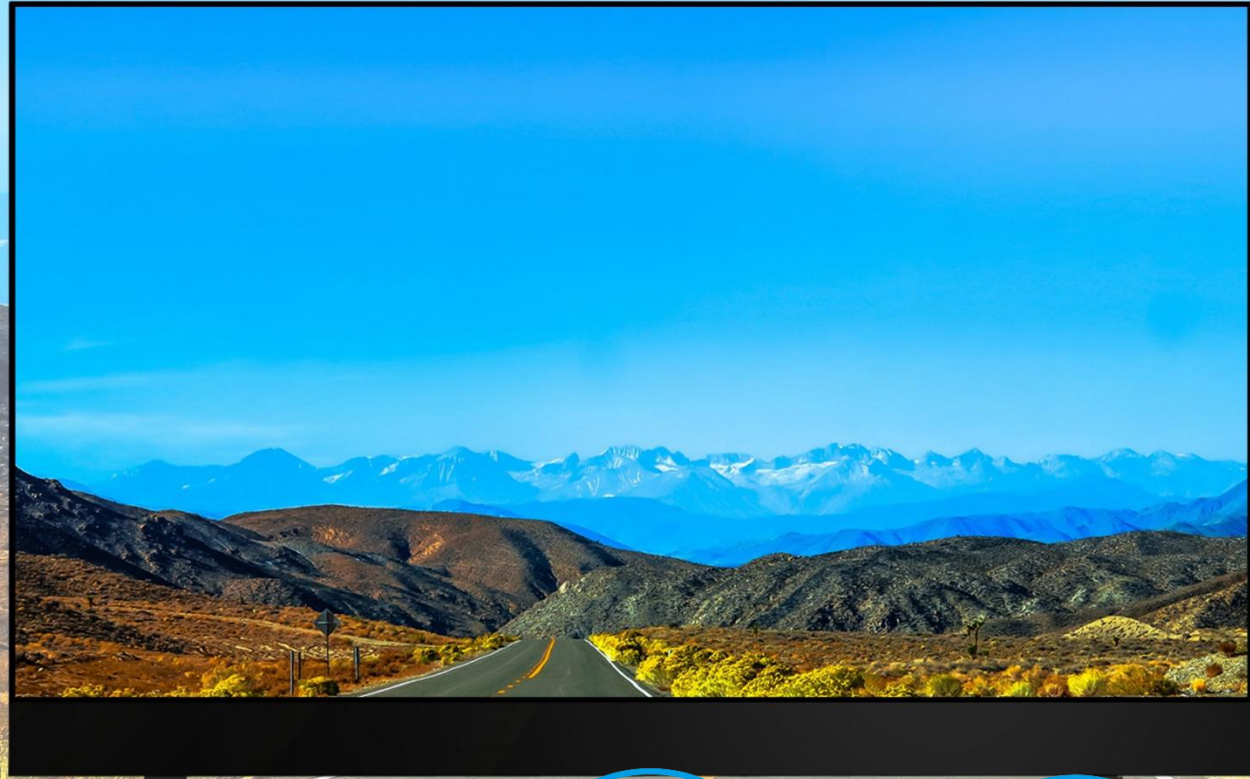


Sphinx

Practical multi-scene smart all-in-one machine

- Screen writing
- Multi-page comments
- Meeting minutes sharing
- Remote management
- File management
- Full screen touch

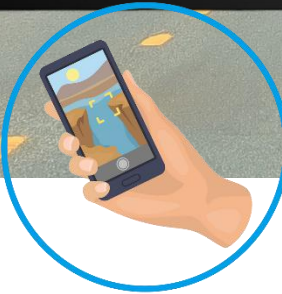
.....



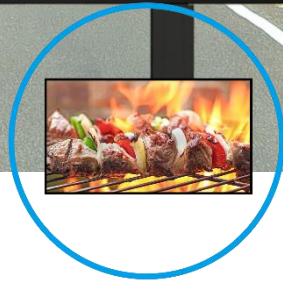
PC



**Video
Conference**



Phone



Cinema



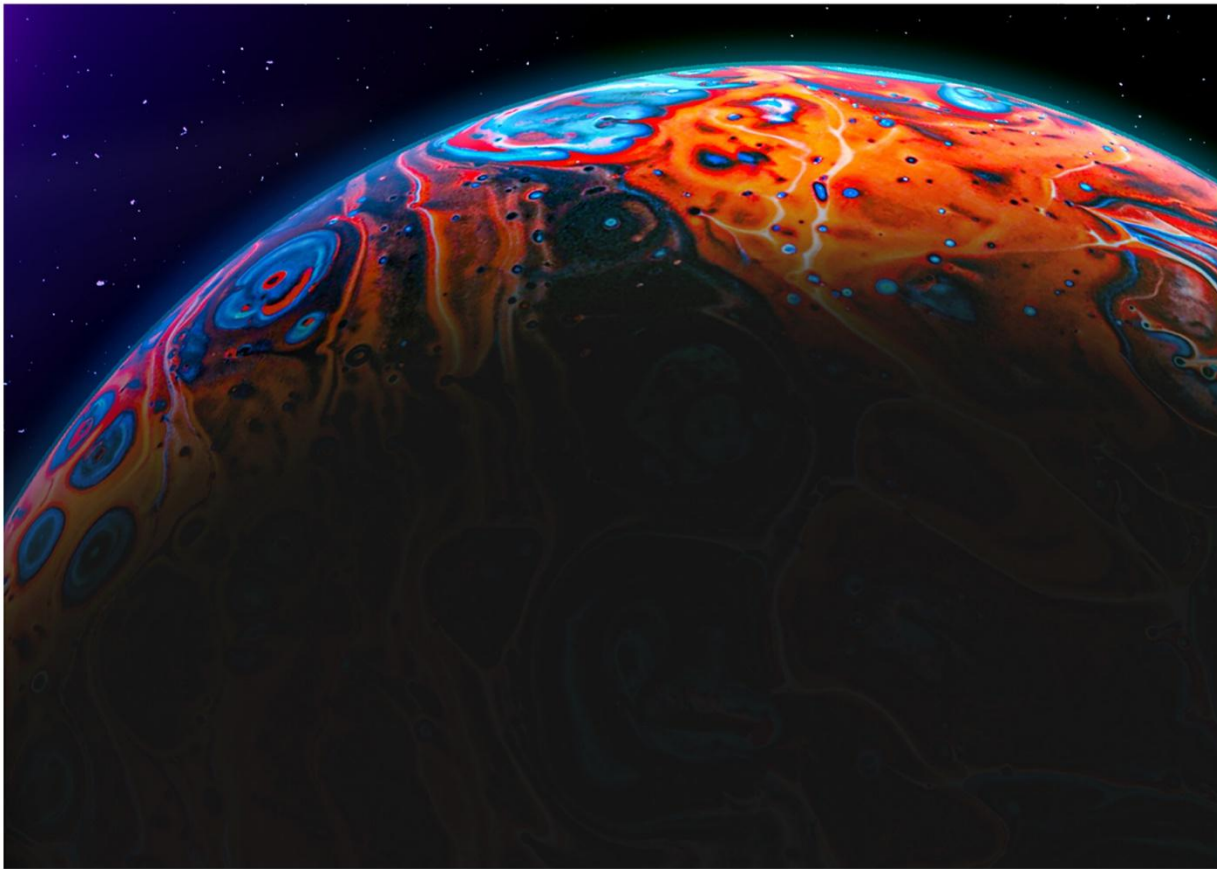
**Electronic
whiteboard**



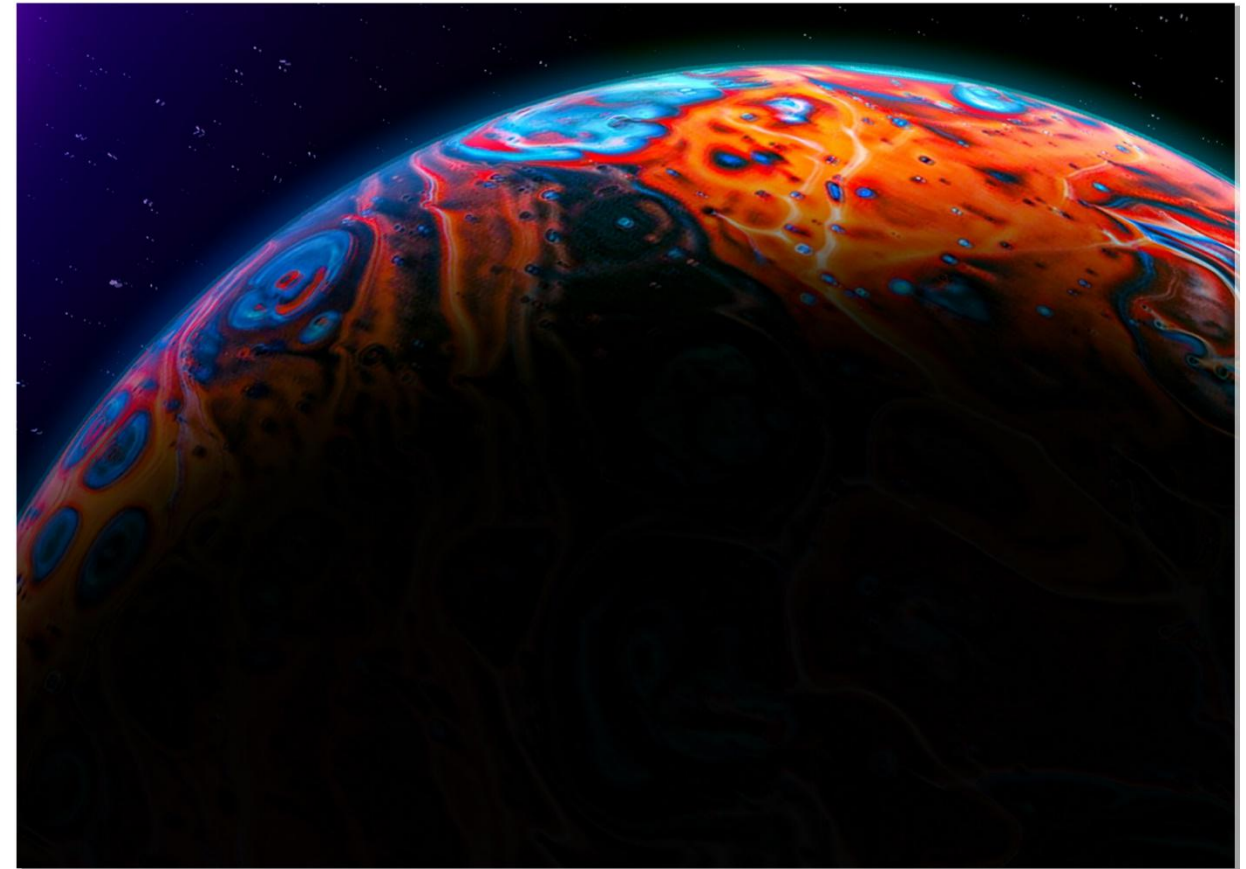
Independent Development,
More Splendid visions
High contrast, high refresh
Wide color gamut, wide viewing angle

Using GOB technology
Anti-collision, moisture-proof,
dust-proof and mildew-proof
Anti-static, front waterproof

Energy saving model
Environmental protection material,
Consumption reduction
Average power consumption 60w/sqm



Sphinx



Ordinary conference machine

Low brightness and high gray presents the ultimate beauty of colors, and the high-definition world will make your heart beat

Independent research and development
Intelligent interaction, born for meetings;
Powerful Huawei Hisilicon chip to escort all your meetings, on-line
and off-line.



海思芯片

Writing whiteboard
Unbounded writing,
Full screen zooming,
Multi-finger roaming,
Manually erasing,
Comments making,
One-click saving



File management

Multi-format file display

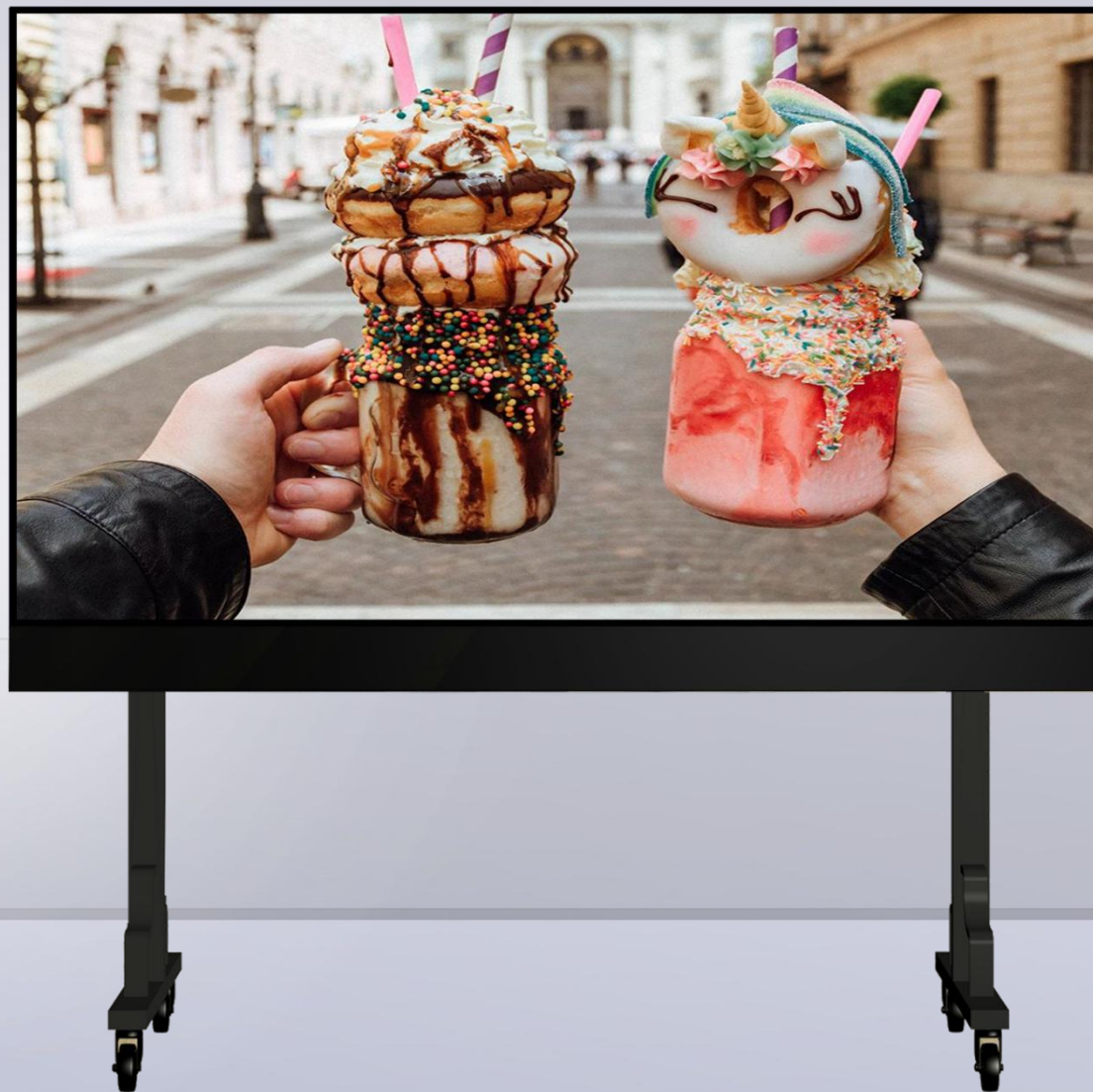
U disk file direct reading

Multiple file classification

Efficient management, access



Wireless screen transmission
Cross-operating system fast screen transferring
Multi-screen sharing,
Flexible interaction,
Unlimited information



- Android system with running memory 2GB, storage 8GB;
- Network port output to LED display;
- The wireless access is designed with dual WIFI function, supporting station and AP modes;
- Infrared remote control, mouse operation;
- Support cloud services
- Provide services of remote information release, and LED display management ;
- Support synchronous and asynchronous playback.



Multiple models

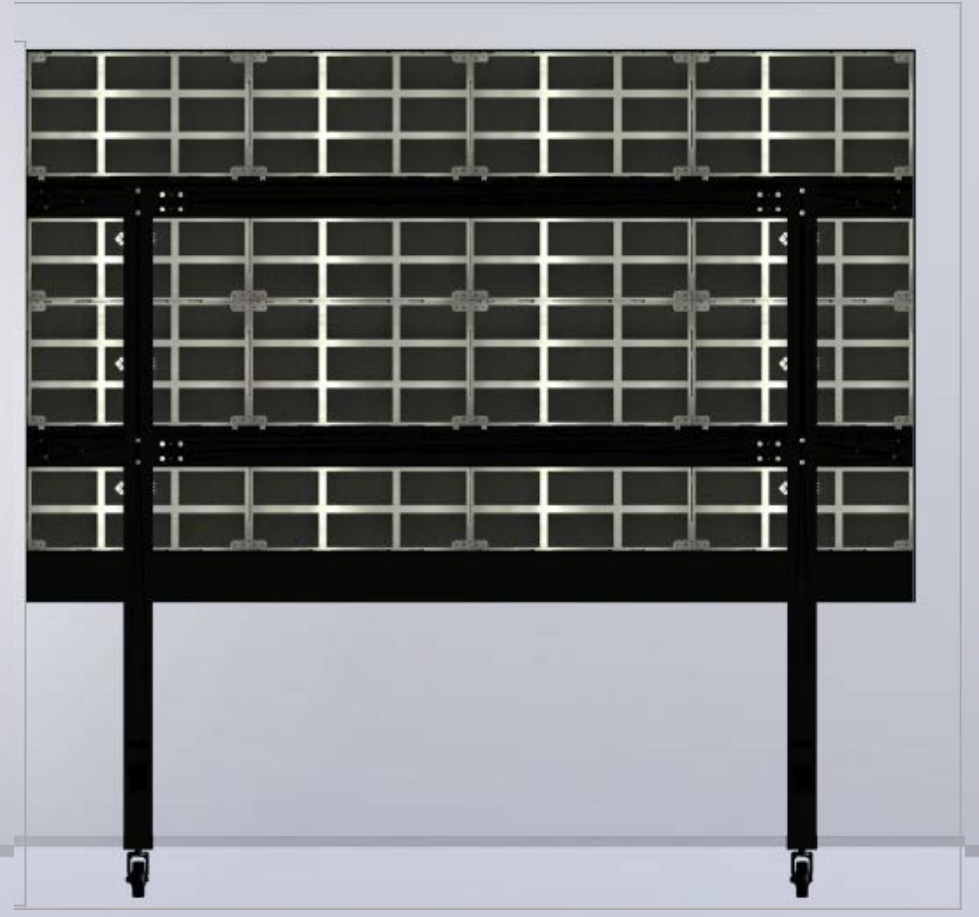


108 "
550W

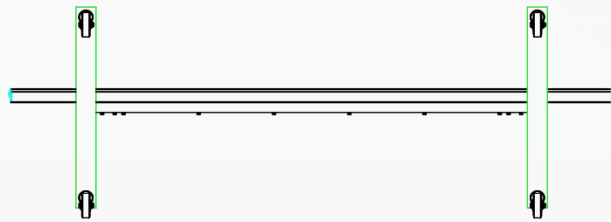
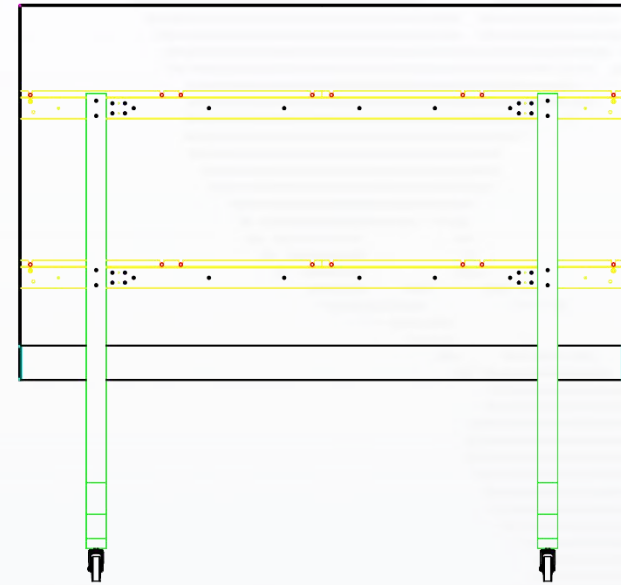
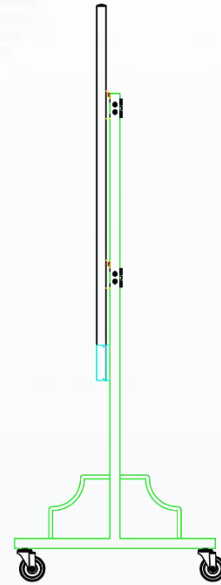
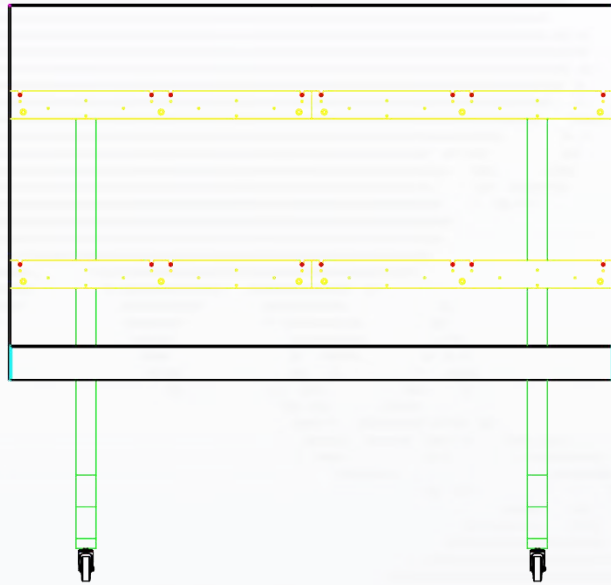
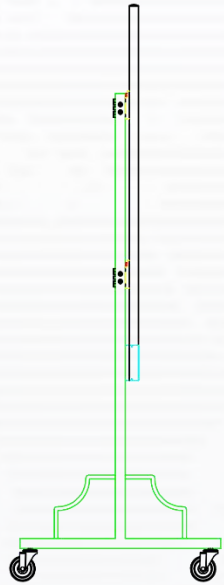
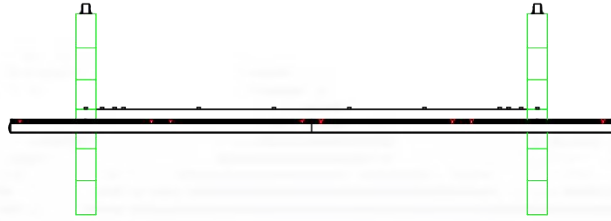
135 "
850W

162 "
1200W

Front and Back



Product Structure



Product Structure

LIKELED-108" P1.25 Sphinx Parameters

Item↵	LIKELED-108"↵	Module flatness↵	≤0.05↵
Pixel pitch(mm)↵	1.25↵	Best view distance↵	4-15m↵
Module resolution↵	120x135↵	Gray level↵	0.2mA starts with grayscale, 50CD gray, 12bit↵
Module size↵	150x168.75mm↵	Frame rate↵	≥120HZ↵
Cabinet size↵	600x337.5mm↵	Refresh rate↵	≥3840HZ↵
Cabinet resolution↵	480x270↵	Soften↵	VICO index↵
Density↵	640000dots/sg.m↵	Control mode↵	synchronization↵
Screen size↵	108'↵	Pixel out of control rate↵	≤0.0003↵
Whole screen resolution↵	2K, 1920x1080↵	MTBF↵	> 10,000H↵
Module item↵	SMD 3 in 1↵	Working voltage↵	AC220±10%, AC110±10%↵
Brightness↵	≥200cd/sg.m↵	Power consumption↵	Max 160W/sg.m,↵ average 60/sg.m↵
Working life↵	100000H↵	Color temperature↵	256 level↵
Scan mode↵	1/120↵	Waterproof level↵	IP40↵
Drive mode↵	Constant current↵	Working Temp↵	-30°C - + 60°C↵
Best view angle↵	175°/175°(H/V)↵	Storage Temp↵	-40°C - + 80°C↵
Brightness uniformity↵	99.5↵	Ambient humidity↵	10%-90%RH↵
Control distance↵	1.transmission distance of unshielded twisted pair is within 100m↵ 2.Multi mode 500m, single mode within 20km↵	video signal↵	SDI, HDI, VGA, DVI, S-video ect↵
Testing report↵	CNAS.CMA ↵	Certification↵	CCC, CE, ROHS, UL, TUV, EMC↵

LIKELED-135" P1.56 Sphinx Parameters

Item	LIKELED-135"	Module flatness	≤0.05
Pixel pitch(mm)	1.56	Best view distance	4-15m
Module resolution	96x108	Gray level	0.2mA starts with grayscale, 50CD gray, 12bit
Module size	150x168.75mm	Frame rate	≥120HZ
Cabinet size	600x337.5mm	Refresh rate	≥3840HZ
Cabinet resolution	384x216	Soften	VICO index
Density	409600dots/sq.m	Control mode	synchronization
Screen size	135"	Pixel out of control rate	≤0.0003
Whole screen resolution	2K, 1920x1080	MTBF	> 10,000H
Module item	SMD 3 in 1	Working voltage	AC220±10%, AC110±10%
Brightness	≥200cd/sq.m	Power consumption	Max 160W/sq.m, average 60/sq.m
Working life	100000H	Color temperature	256 level
Scan mode	1/96	Waterproof level	IP40
Drive mode	Constant current	Working Temp	-30°C - +60°C
Best view angle	175°/175°(H/V)	Storage Temp	-40°C - +80°C
Brightness uniformity	99.5	Ambient humidity	10%-90%RH
Control distance	1.transmission distance of unshielded twisted pair is within 100m 2.Multi mode 500m, single mode within 20km	video signal	SDI, HDI, VGA, DVI, S-video ect
Testing report	CNAS,CMA	Certification	CCC, CE, ROHS, UL, TUV, EMC

LIKELED-162" P1.875 Sphinx Parameters

Item	LIKELED-162"	Module flatness	≤ 0.05
Pixel pitch(mm)	1.875	Best view distance	4-15m
Module resolution	800x90	Gray level	0.2mA starts with grayscale, 50CD gray, 12bit
Module size	150x168.75mm	Frame rate	≥ 120HZ
Cabinet size	600x337.5mm	Refresh rate	≥ 3840HZ
Cabinet resolution	320x180	Soften	VICO index
Density	248000dots/sgm	Control mode	synchronization
Screen size	162"	Pixel out of control rate	≤ 0.0003
Whole screen resolution	2K, 1920x1080	MTBF	> 10,000H
Module item	SMD 3 in 1	Working voltage	AC220±10%, AC110±10%
Brightness	≥ 200cd/sgm	Power consumption	Max 160W/sgm, average 60/sgm
Working life	100000H	Color temperature	256 level
Scan mode	1/80	Waterproof level	IP40
Drive mode	Constant current	Working Temp	-30°C - + 60°C
Best view angle	175°/175°(H/V)	Storage Temp	-40°C - + 80°C
Brightness uniformity	99.5	Ambient humidity	10%-90%RH
Control distance	1.transmission distance of unshielded twisted pair is within 100m 2.Multi mode 500m, single mode within 20km	video signal	SDI, HDI, VGA, DVI, S-video ect
Testing report	CNAS.CMA	Certification	CCC, CE, ROHS, UL, TUV, EMC

Product IC Introduction

RSCK IC is a 16-channel constant current output LED driver chip that adopts multi-level current technology. It can adjust the current output in real time according to the display content. It can support up to 128 scan lines and the minimum output current can reach 0.25mA. Based on the above technical characteristics, the RSCK chip will effectively reduce the design difficulty and product cost of small-pitch displays. Its lower power consumption and excellent picture quality will significantly enhance the competitiveness of LED screens.

Features:

- 16 constant current output channels
- 1~128 arbitrary line scan
- Multi-level current control mode is adopted, and the current output can be adjusted in real time according to the display content
- Integrated ghost image elimination function
- Effectively eliminate dead pixels, crosshairs and open-circuit and short circuit
- Current output range 0.25~25mA @ VDD=5V 0.25~ 10mA @ VDD =3.3V
- Current accuracy difference between channels: less than $\pm 2.5\%$ (maximum) difference between chips: less than $\pm 3\%$ (maximum)
- 16-level current gain adjustable
- External resistor can control current output value
- Up to 30MHz clock frequency
- Operating voltage range: 3.3~5V



We are the flag and beacon regardless of quality, price, or service