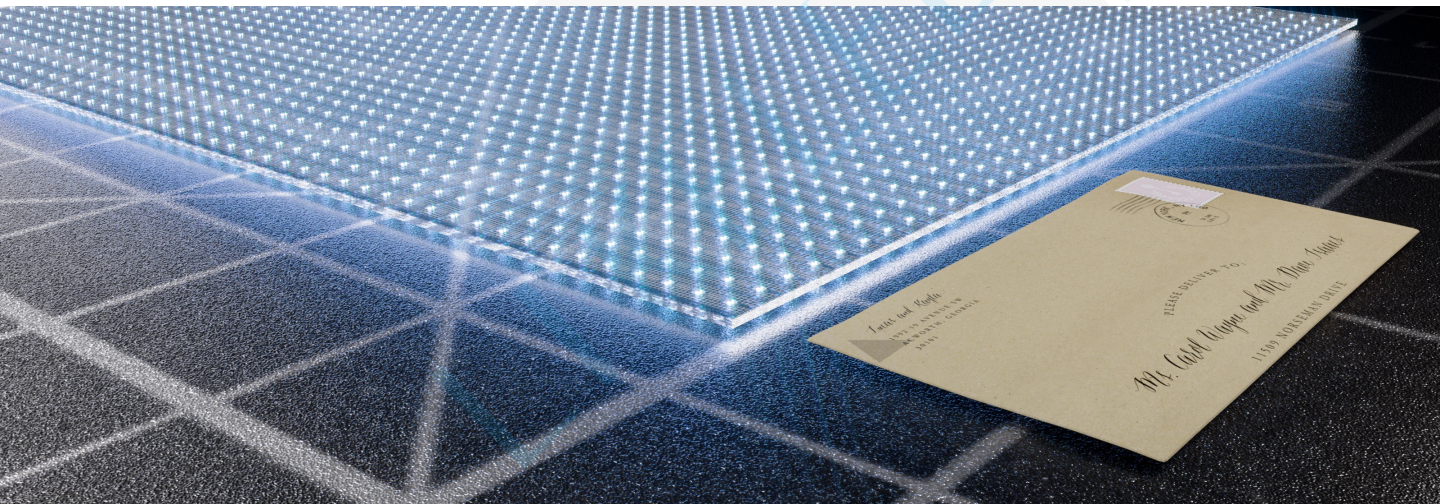


LED Flexible Transparent Film Display

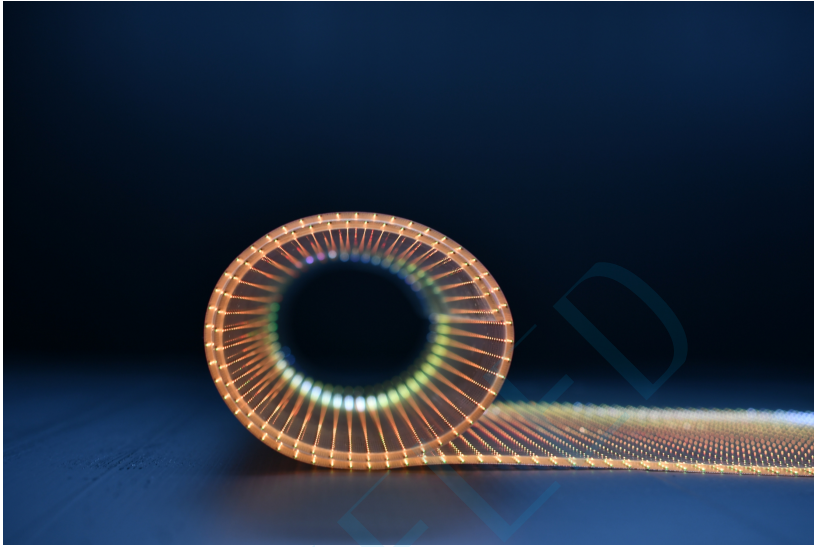


Product Image

Details

Independent research and development, keep improving

REX-P6



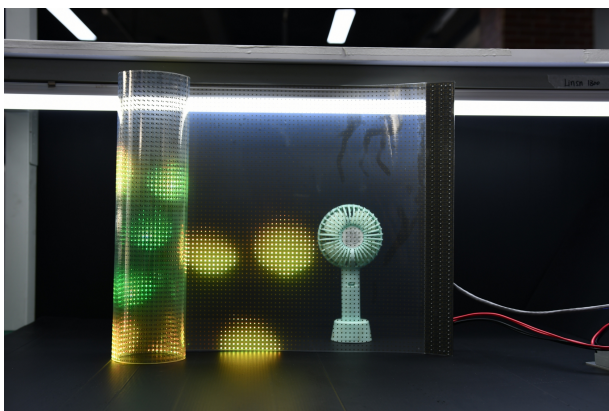
Plane display

Colorful and transparent

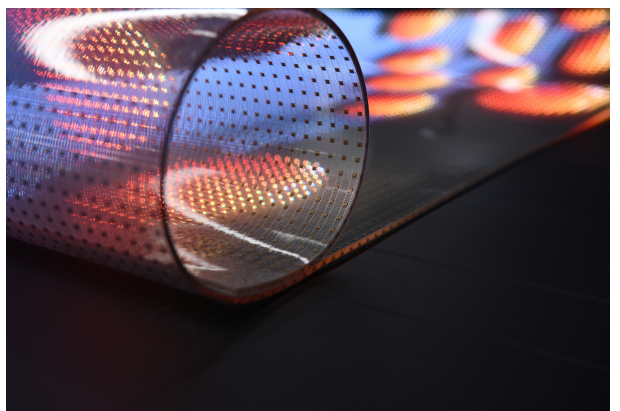
Flexibility

Break through the routine and extend infinitely

REX-P6



REX-P6



Product parameter table

Model	P6	P8	P10	P15	P20
Module size (mm)	816*384	1000*400	1000*400	990*390	1000*400
LED light	REE1515	REE1515	REE1515	REE2022	REE2022
Pixel composition	R1G1B1	R1G1B1	R1G1B1	R1G1B1	R1G1B1
Pixel spacing (mm)	6*6	8*8	10*10	15*15	20*20
Module pixel	136*64=8704	125*50=6250	100*40=4000	66*26=1716	50*20=1000
Pixel/m2	27777	16500	10000	6625	2500
Brightness	2000/4000	2000/4000	2000/4000	2000/4000	2000/4000
Permeability	90%	92%	94%	94%	95%
Angle of view °	160	160	160	160	160
Input voltage	AC110-240V50/ 60Hz	AC110-240V50/ 60Hz	AC110-240V50/ 60Hz	AC110-240V50/ 60Hz	AC110-240V50/ 60Hz
Peak power	400w/m ²	400w/m ²	400w/m ²	400w/m ²	400w/m ²
Average power	200w/m ²	200w/m ²	200w/m ²	200w/m ²	200w/m ²
Work environment	Temperature - 20~55 Humidity 10-90%	Temperature - 20~55 Humidity 10-90%	Temperature - 20~55 Humidity 10-90%	Temperature - 20~55 Humidity 10-90%	Temperature - 20~55 Humidity 10-90%
Weight	1.3kg	1.3kg	1.3kg	1.3kg	1.3kg
Thickness	2.5mm	2.5mm	2.5mm	2.5mm	2.5mm
Drive mode	static state	static state	static state	static state	static state
Control system	Nova/Colorlight	Nova/Colorlight	Nova/Colorlight	Nova/Colorlight	Nova/Colorlight
Typical value of life	100000H	100000H	100000H	100000H	100000H
Grayscale level	16bit	16bit	16bit	16bit	16bit
Refresh rate	3840Hz	3840 Hz	3840Hz	3840 Hz	3840 Hz

Product features

LED

light drive in one, independent research and development, high reliability, mini LED device, industry leading

High transmittance

The transmittance is more than 90%, which does not affect the glass daylighting

Easy to install

without steel structure, just stick the thin screen slightly and connect the power signal

AB version

Flexible

for any surface

Light and thin

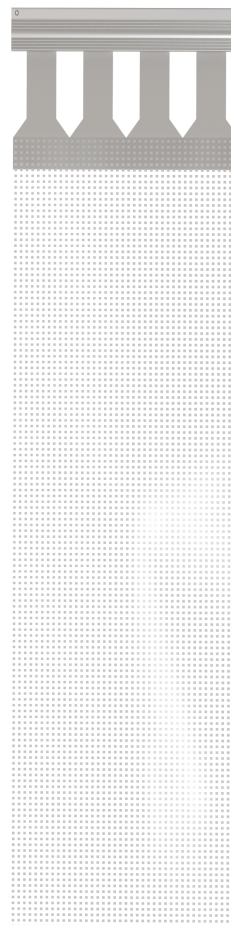
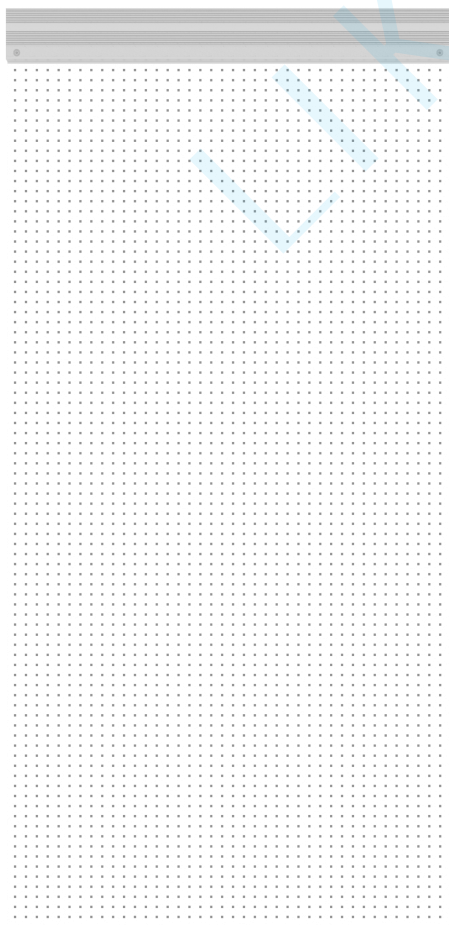
as thin as 2.5mm, as light as 5kg/m²

UV resistance

5~10 years can ensure no yellowing

Flame retardant

flame retardant grade V1

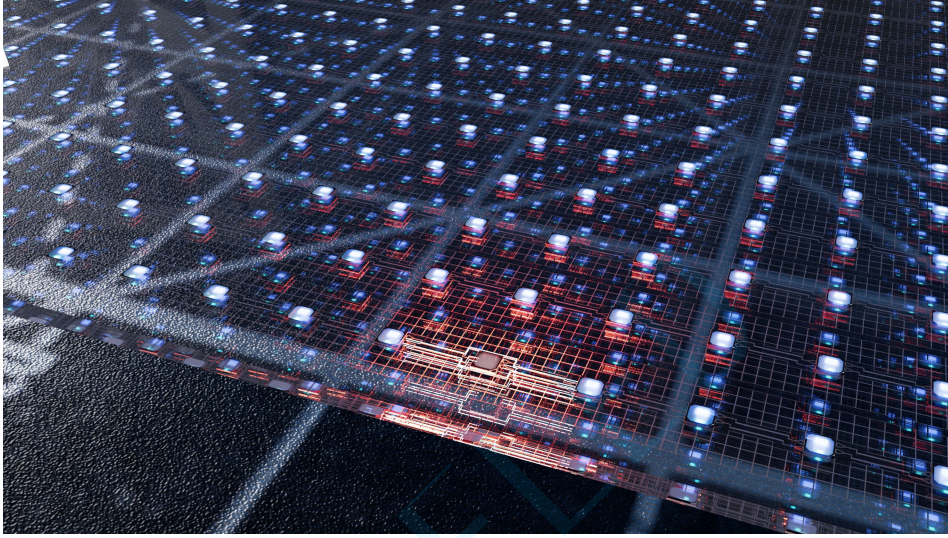


Mini LED

Model:Ree1313/1515/2222

The combination of light and drive, independent research and development, high reliability, industry leading

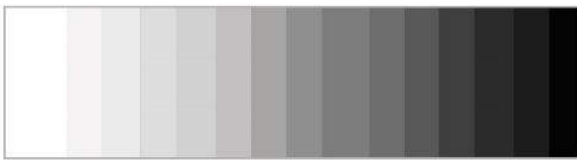
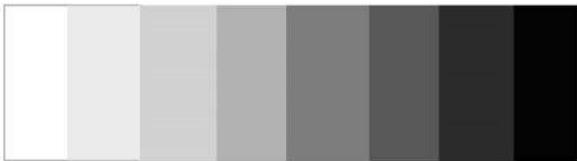
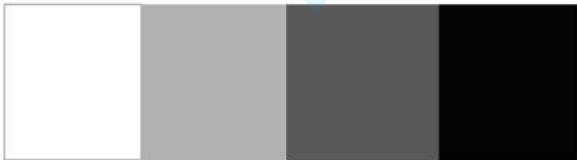
1.Breakpoint continuation



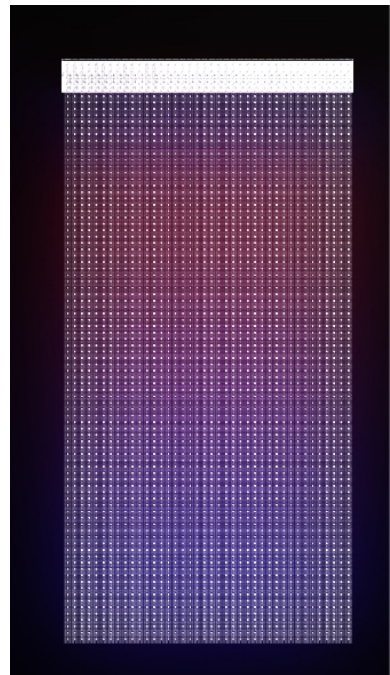
2.High gray scale display (true 16bit)

RGB channel adopts 32-level current linear regulation, and maintains true 16-bit grayscale display under any current, which is applicable to the consistency of indoor, semi-outdoor and outdoor current requirements;

反差大



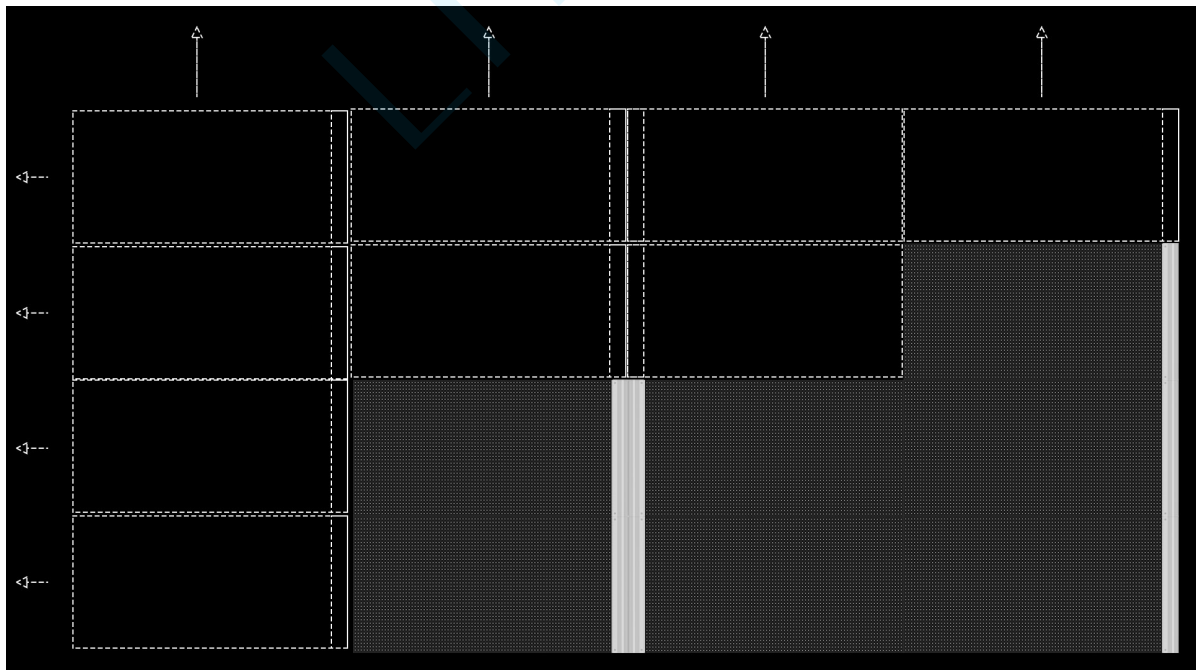
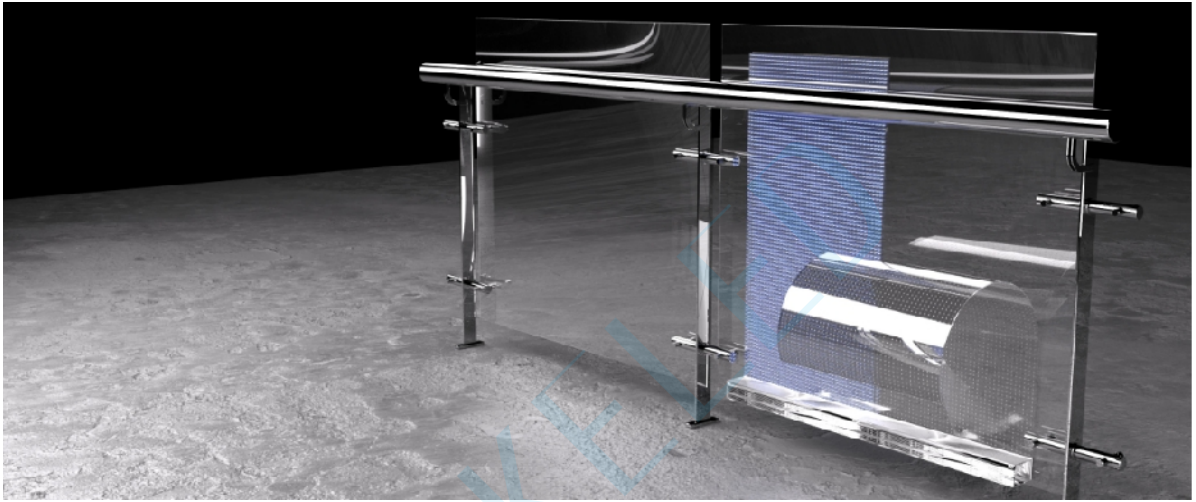
反差小



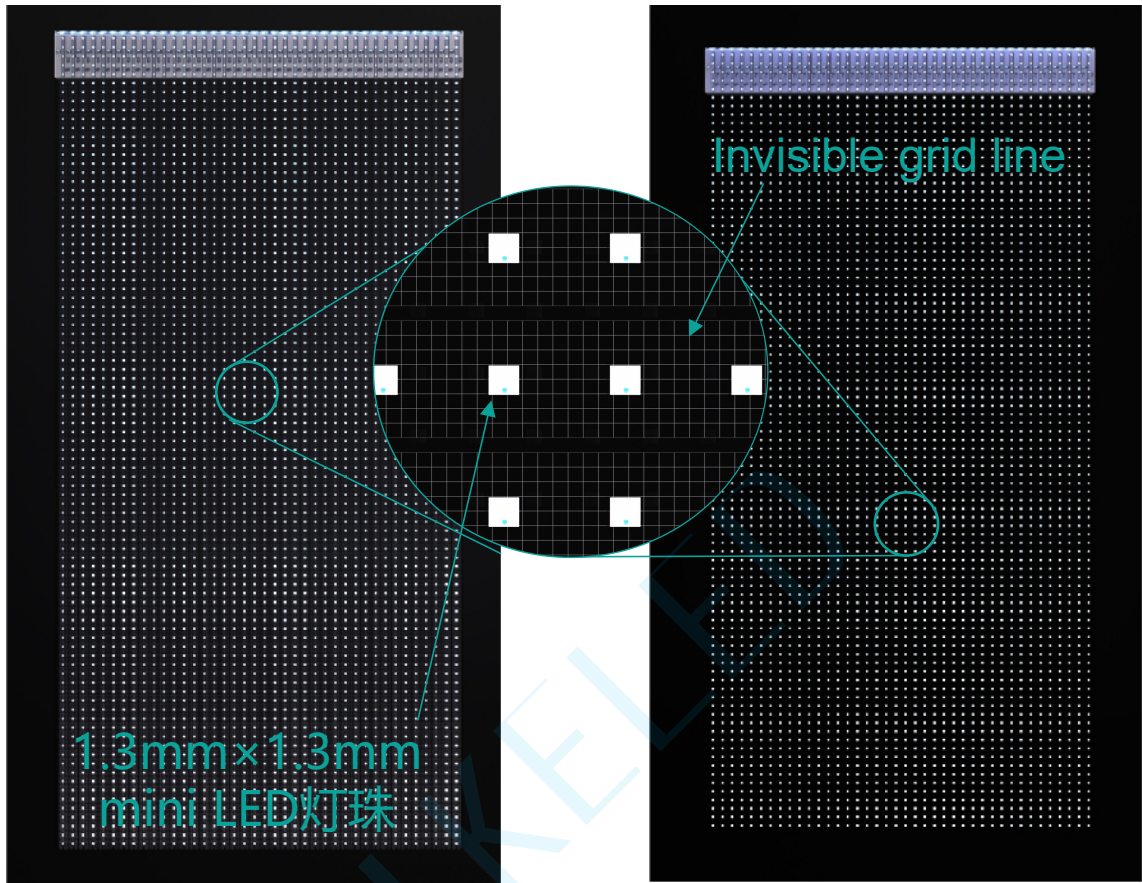
Easy installation

No steel structure is required, just stick the thin screen slightly and connect the power signal

Self-developed glue filling process (the screen body with its own viscosity can be directly attached to the glass surface, with strong colloid adsorption, and the viscosity will also increase with the passage of time due to the inherent characteristics of the colloid)



High transmittance



Use the integrated MiniLED lamp beads to improve its own permeability

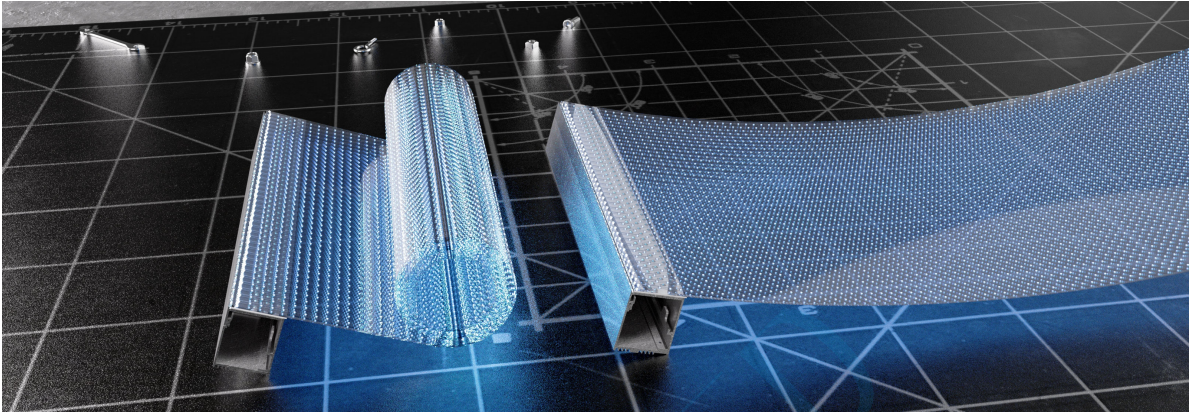
Use invisible grid circuit to improve its permeability

- The transmittance is more than **90%**, which does not affect the glass daylighting

Model	P6	P8	P10	P15	P20
Permeability	90%	92%	94%	94%	95%

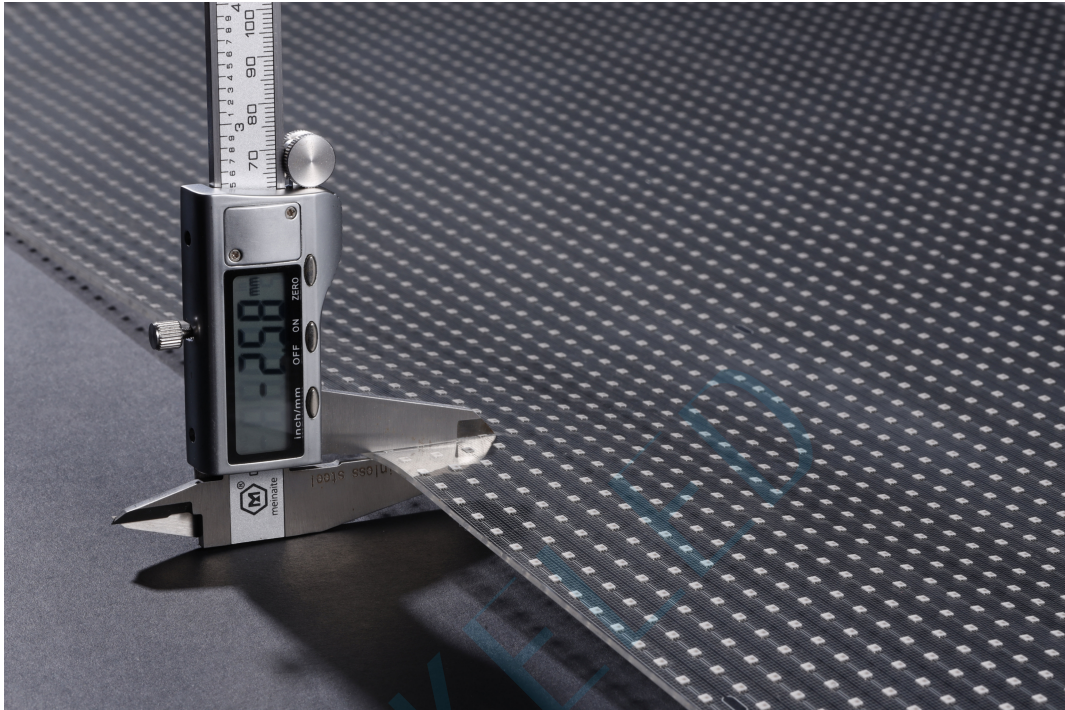
Flexibility

- Applies to any surface
- Fig. 1 Real shot of module curled into a circle
- Surface case

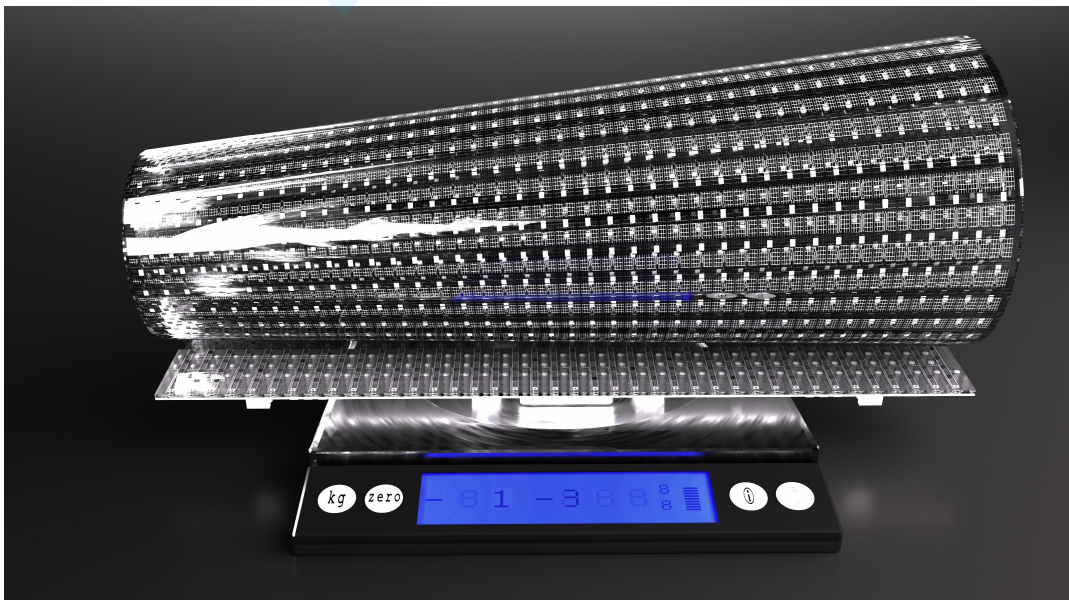


Light and thin

- Thickness: 2.5mm

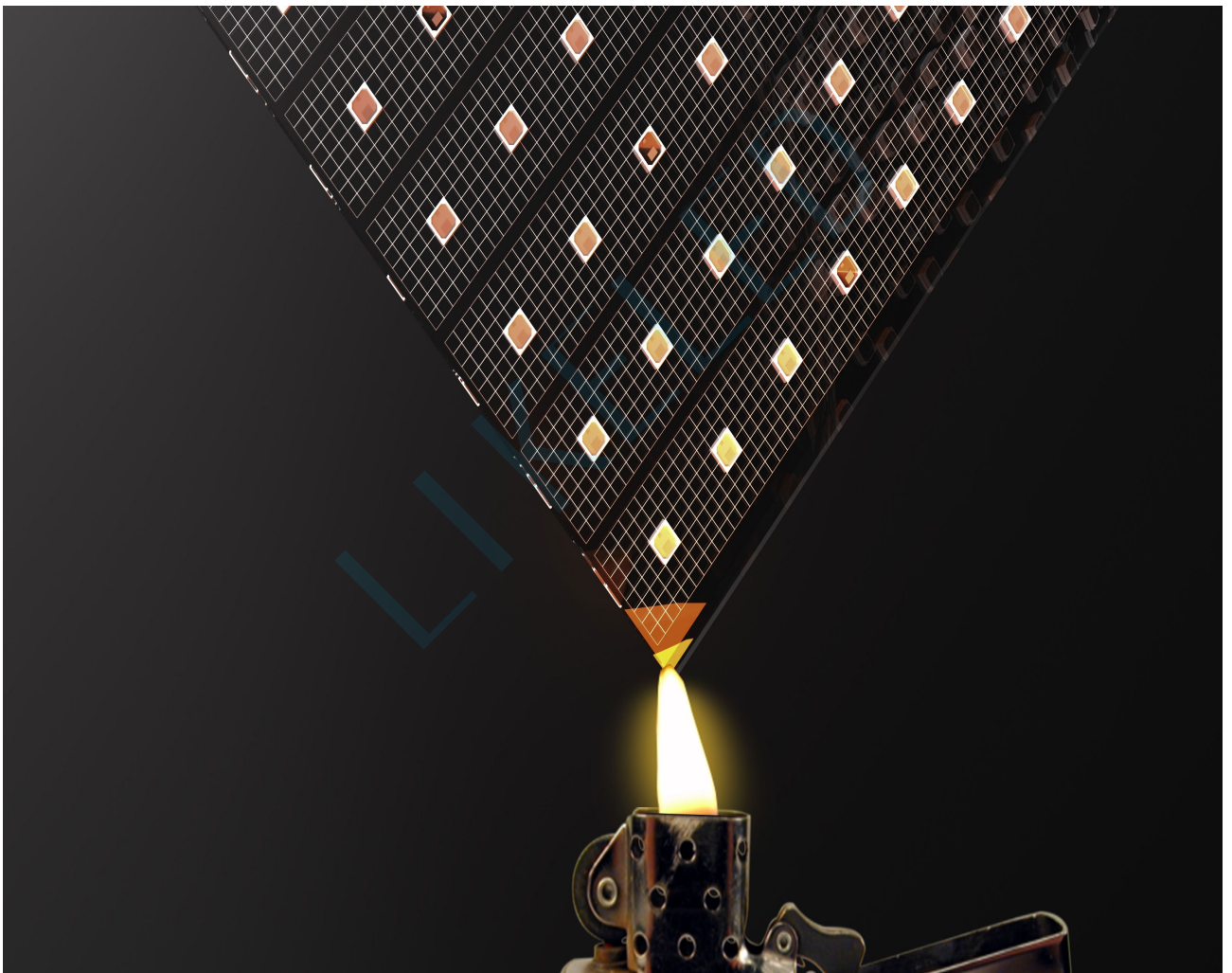


- Weight: 1.3KG



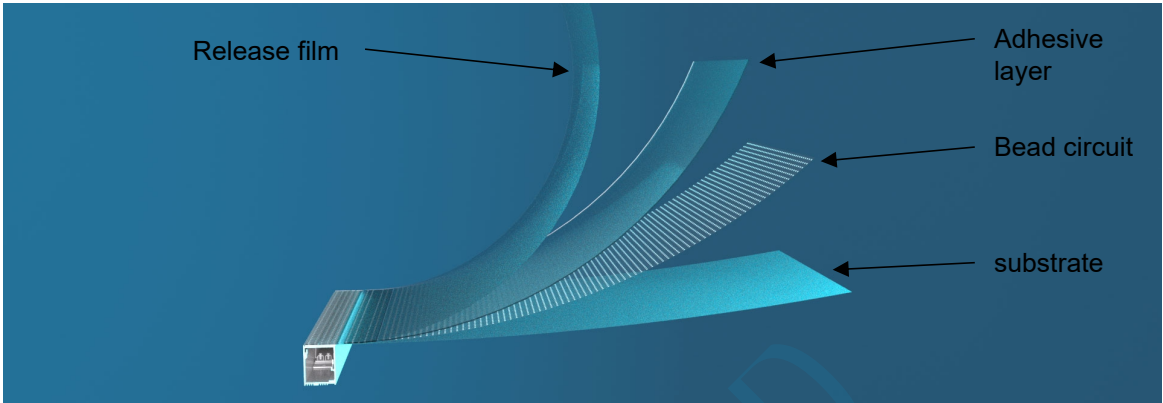
Flame retardant and UV resistant

- Grade V1 flame retardant
- Uv resistance without yellowing > 8 years

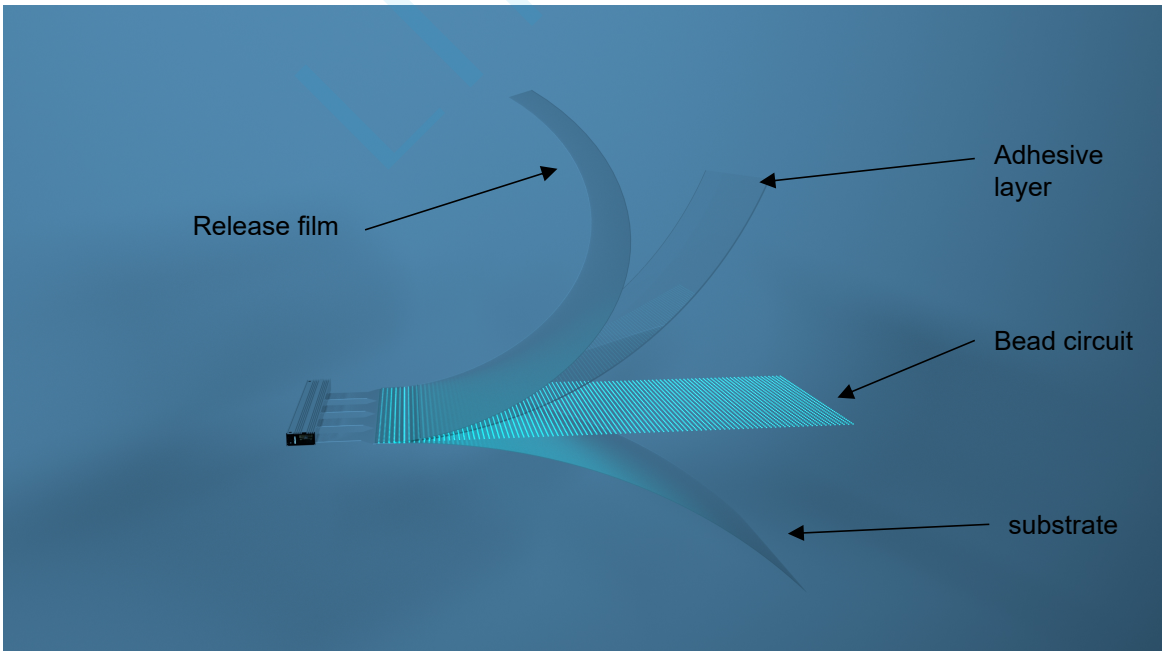


Exploded view of module (with power box)

- **Hard connection**



- **Soft row cable connection**



Product comparison chart

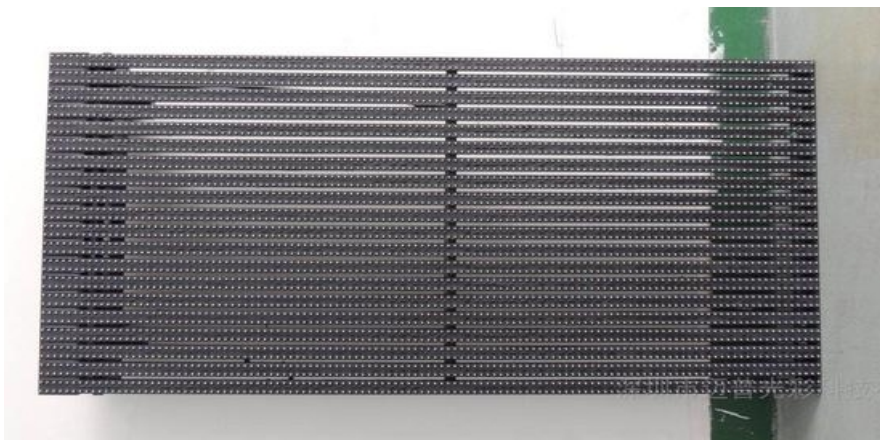
- Appearance



our products

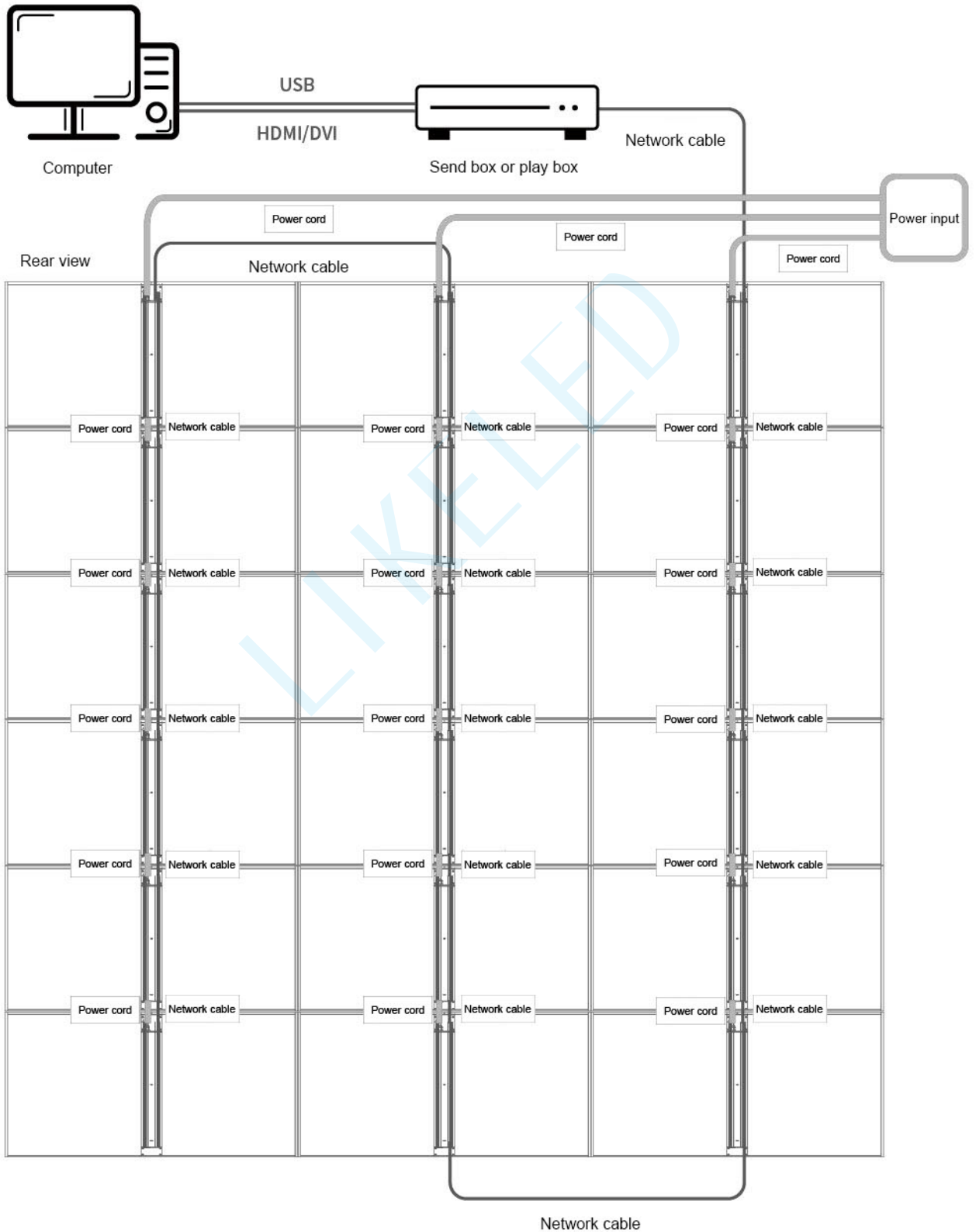


Other 's products



Other 's products

Installation diagram and wiring diagram (same as asynchronous configuration)



Application scenario - glass curtain wall

- (Picture of curved glass curtain wall)



- (Picture of glass curtain wall of the building)



Application Scenario - Retail Store

Transparent LED display is a new type of display technology with high transparency, vivid colors and high brightness. In stores, transparent LED displays can be applied to store glass windows to attract customers' attention and improve the brand image of the store. We propose a transparent LED display in the store glass window application scheme. The solution uses transparent LED displays installed on store glass windows to facilitate stores to display advertising messages and attract customers' attention without taking up large areas of space.

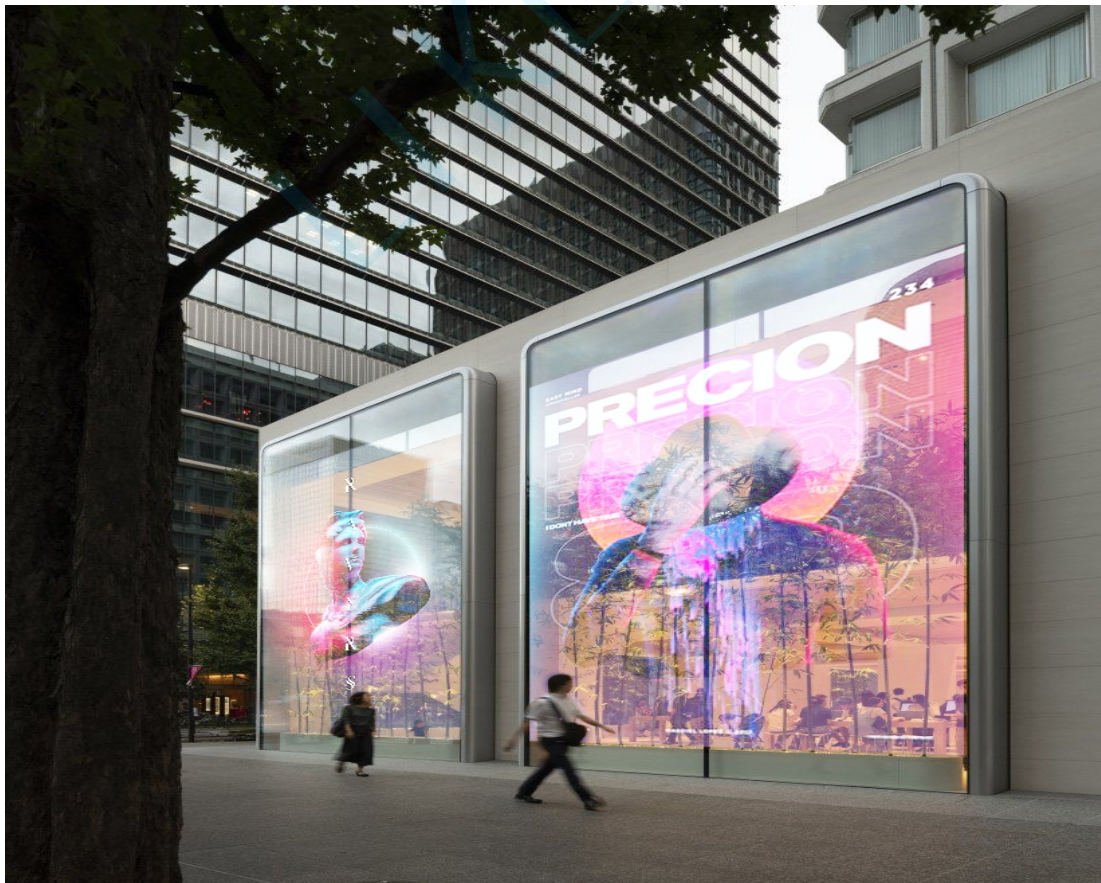
The application scenario of this solution includes the following aspects:

Store product display: Transparent LED display can be used to display the store's product information and promotional information, to attract customers' attention.

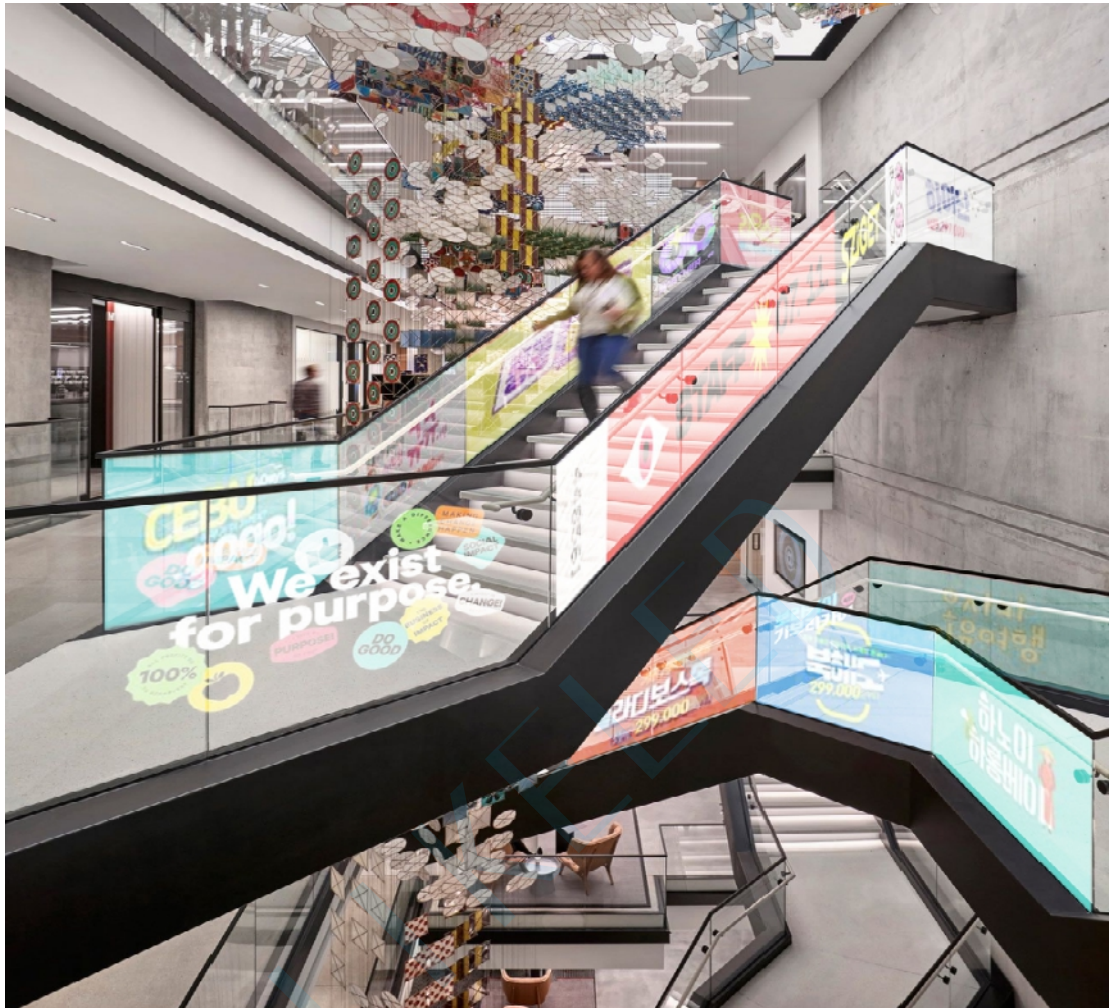
Brand promotion: Stores can use transparent LED displays to promote brand image and culture and enhance brand influence.

Activity promotion: Stores can use transparent LED displays to promote various activities, such as new product releases and discount promotions.

In addition, the solution can realize real-time update of information and improve the timeliness of store information, as well as greatly improve the visual aesthetics and brand image of the store, making the store more attractive and modern.



Application scenario - glass guardrail



In shopping malls, transparent LED displays can be applied to the glass parapets of shopping malls to attract customers' attention and improve the brand image. We propose an application scheme of transparent LED display in the glass guardrail of shopping mall. The scheme uses a transparent LED display mounted on the glass guardrail in order to display advertising messages and attract customers' attention without taking up a large area of space.

The application scenario of this solution includes the following aspects:

Activity promotion: shopping malls can use the transparent LED display to promote various activities, such as new product release, brand display, etc.

Shopping mall advertising: Transparent LED display can be used to display shopping mall advertising information, including the latest special offers, brand promotion, etc.

Navigation instruction: shopping malls can display the map and related information of the mall on the transparent LED display to facilitate customers' navigation and visit.

Application scenario - handrail elevator

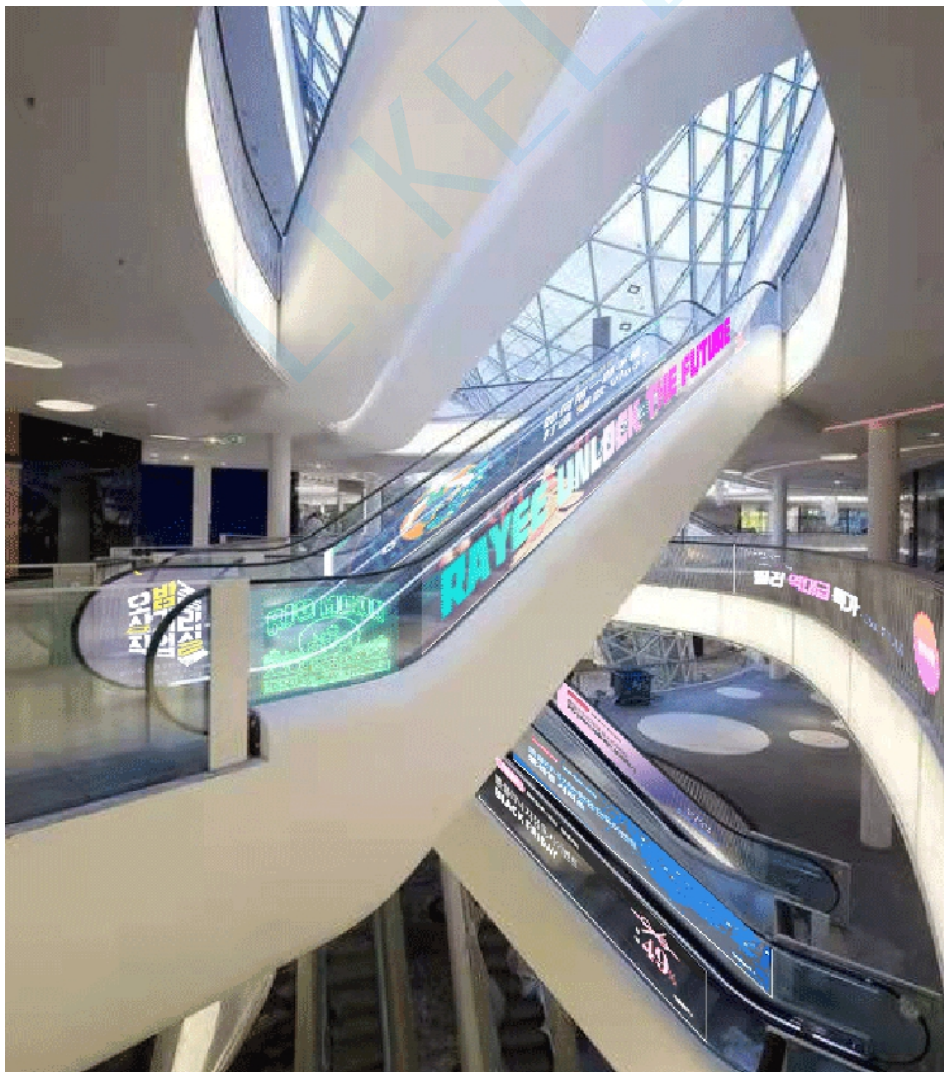
In the escalator, the transparent LED display can be used to display a variety of information and advertising, making it more convenient for passengers to understand the elevator information and obtain useful information while taking the elevator. We propose an application scheme of transparent LED display in escalator. A transparent LED screen is installed on the handrail of the elevator, so that passengers can get useful information without affecting the transparency of the elevator.

The application scenarios of this solution include the following aspects:

Elevator running status display: Transparent LED display can be used to display the running status of the elevator, such as running speed, current floor, stopping floor and other information.

Advertising display: Transparent LED display can be used to broadcast advertisements, such as advertisements of the business on the floor where the elevator is located or relevant social welfare advertisements, etc.

Other information display: Transparent LED display can also be used to display other information, such as weather forecast, clock, etc.



Application Scenario - Others

